

# Corflex

## Modular calorifier

The Corflex range allows you to select, in 4 steps, the calorifier specifications matching your needs.

## PRODUCT +

- A modular range
- Choice of openings depending on the type of use
- Modification of connections based on boiler room constraints
- Incorporation of a sheathed or steatite electric back-up heating unit

### Warranty

- Tank: 5 years

### Corflex's freedom of design enables you to obtain a cylinder that is perfectly adapted to:

- All types of application: primary or DHW calorifiers, cylinders with electric back-up heating unit with specific power and position
- Boiler room constraints: operating pressure up to 10 bar, suitable connection orientation, fire-rated jacket

With CORFLEX range, you can configure a calorifier adapted to your specific needs by choosing the tank and its equipment in 4 steps. Each element has its own reference and has to be quoted upon order.

### MAKE YOUR SELECTION



## 1 CHOICE OF A TANK AND AN OPERATING PRESSURE

- : Optional earthing with tailgate.

Models	Ø tank (mm)	Height with risers (mm)	Primary Corflex (Corprimo type)			DHW Corflex (Corhydro type)	
			4 bar	8 bar	10 bar	8 bar	10 bar
			Ref.	Ref.	Ref.	Ref.	Ref.
500 •	650	1,950	065 030	065 044	065 058	065 072	065 084
750 •	790	1,985	065 031	065 045	065 059	065 073	065 085
900 •	790	2,265	065 097	065 098	065 099	065 129	065 130
1000	790	2,510	065 032	065 046	065 060	065 074	065 086
1000 TB •	1,000	1,740	065 033	065 047	065 061	065 075	065 087
1500 •	1,000	2,265	065 155	065 156	065 157	065 158	065 159
1500 TB •	1,250	1,745	065 035	065 049	065 063	065 077	065 089
2000 •	1,250	2,180	065 036	065 050	065 064	065 078	065 090
2500	1,250	2,540	065 037	065 051	065 065	065 079	065 091
2500 TB	1,500	1,956	065 038	065 052	065 066	065 080	065 092
3000	1,250	2,965	065 039	065 053	065 067	065 081	065 093
3000 TB	1,500	2,176	065 040	065 054	065 068	065 082	065 094
4000 •	1,750	2,300 •	065 041	065 055	065 069	-	-
5000 •	1,750	2,720 •	065 042	065 056	065 070	-	-

TB: Low models. \*No risers on the 4000 and 5000 models.

## 2 CHOICE OF A JACKET

By default: no jacket on the cylinder.

The jacket references below must be paired with a tank.

M1 and NC flexible jackets are supplied unmounted.

The M0 steel jacket is delivered mounted.

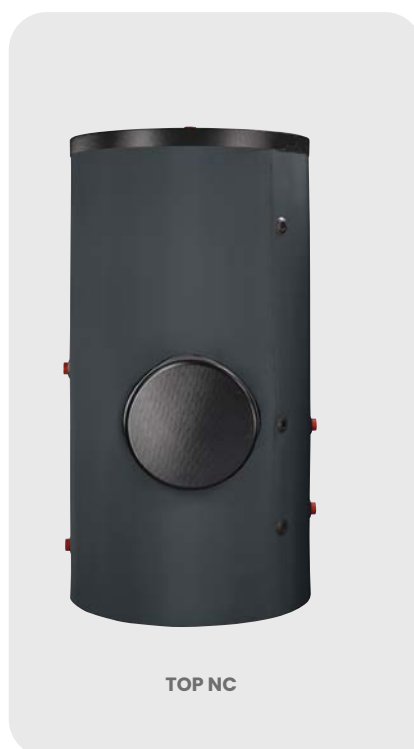
The jackets will be pre-cut at the factory according to the openings selected in step 3.

Models	Flexible M1 100 mm		Flexible TOP NC 100 mm		Steel M0 100 mm	
	Heat loss tank Ua* (w/k)	Ref.	Heat loss tank Ua* (w/k)	Ref.	Heat loss tank Ua* (w/k)	Ref.
500	1.380	083 072	1.546	083 086	1.218	083 002
750	1.759	083 073	1.972	083 087	1.553	083 003
900	2.046	083 155	2.296	083 156	1.807	083 004
1000	2.157	083 074	2.417	083 088	1.905	083 005
1000 TB	2.213	083 075	2.481	083 089	1.954	083 006
1500	2.593	083 183	2.907	083 184	2.289	083 007
1500 TB	2.898	083 077	3.241	083 091	2.559	083 008
2000	3.296	083 078	3.685	083 092	2.910	083 009
2500	3.722	083 079	4.167	083 093	3.286	083 010
2500 TB	4.028	083 080	4.509	083 094	3.556	083 011
3000	4.231	083 081	4.741	083 095	3.736	083 012
3000 TB	4.352	083 082	4.889	083 096	3.842	083 013
4000	5.307	083 083	5.962	083 097	4.685	083 014
5000	6.484	083 084	7.284	083 098	5.724	083 015

To find out the heat loss corresponding to your configuration, add the value associated with the tank capacity and the value(s) associated with the openings (flanges and/or manhole) selected.

Openings	Heat loss Ua* (W/K)		
	Flexible M1 100 mm	Flexible TOP NC 100 mm	Steel M0
Flange	0.093	0.093	0.093
Manhole	0.269	0.269	0.269

\* Storage temperature at 65°C - Room temperature at 20°C. Values determined according to RE2020.



# Corflex

## Modular calorifier

### 3 CHOICE OF INSPECTION OPENINGS AND ELECTRIC BACK-UP HEATING UNITS

**By default:** the Corflex (primary or DHW) contains no openings (no flanges or manholes).

**Openings are optional, and can be selected alone or paired with:**

- Either one or more sheathed heating elements
- Or with a steatite heating element (see possible pairings in the diagrams below).

**Heating elements -> Steatite or Sheathed:** The sheathed heating element, submerged in the cylinder, is recommended for water of medium hardness. For very hard or very soft water, a steatite heating element is preferable, as it is protected in a perfectly watertight sheath.

Configuration 1: with or without sheathed heating element(s)	Configuration 2: with a steatite heating element
<p>Up to four optional inspection openings:</p> <ul style="list-style-type: none"> <li>● High flange</li> <li>● Intermediate flange } DN112</li> <li>● Low flange</li> <li>● DN400 manhole (full or with DN112 flange opening)</li> </ul> <p>• Each <b>DN112</b> opening may or may not be fitted with a sheathed electrical heating element</p>	<p>Up to two optional inspection openings:</p> <ul style="list-style-type: none"> <li>● Specific DN150 or DN210 low flange</li> <li>● DN400 manhole</li> </ul> <p>• The steatite heating element is <b>systematically</b> mounted on the specific <b>DN150 or DN210</b> low flange position</p>
<p> On the 750, 1000 TB, 1500 TB, 2500 TB and 3000 TB models, it is not possible to combine high position ● and intermediate position ● flanges.</p> <p>The manhole ● is not compatible with the 500 model.</p>	<p> The manhole ● is not compatible with the 500 model.</p>

### A. CHOICE OF INSPECTION OPENINGS

#### Dimensional specifications

Height of openings (in mm)															
	Ref.	500	750	900	1000	1000 TB	1500	1500 TB	2000	2500	2500 TB	3000	3000 TB	4000	5000
High flange ●	D	1,370	1,425	1,705	1,950	1,105	1,630	1,036	1,436	1,766	1,188	2,156	1,327	1,628	2,048
Intermediate flange ●	C	970	1,111	1,200	1,374	941	1,077	1,036	1,036	1,216	1,188	1,361	1,088	1,158	1,368
Manhole ●	B	-	780	780	780	733	733	799	799	799	866	799	866	896	896
Low flange ●	A	470	450	450	450	525	525	591	591	591	658	591	658	688	688

## References

		Corflex SM1/SNC flexible jacket	Corflex TM0 steel jacket
Possible openings for Corflex		Ref.	Ref.
DN112 FLANGE (Only compatible with sheathed heating element)	LOW POSITION	029 409	029 751
	INTERMEDIATE POSITION	029 504	029 752
	HIGH POSITION	029 505	029 753
DN150 or DN210 FLANGE	Included in "Flange + steatite heating elements" kits (see Steatite heating element price table)		
MANHOLE	FULL	029 410	029 756
	WITH DN112 Flange OPENING	029 805	029 807



On the 750, 1000 TB, 1500 TB, 2500 TB and 3000 TB models, it is not possible to combine high position and intermediate position flanges.

The manhole is not compatible with the 500 model.

## B. CHOICE OF ELECTRIC BACK-UP HEATING UNIT(S)

### Compatibility of heating elements with cylinder models

Models	Steatite heating elements					Sheathed heating elements				
	4.8 kW	9 kW	12 kW	18 kW	24 kW	5 kW	10 kW	15 kW	25 kW	30 kW
500	.					.	.			.
750 to 1000	.	.				.	.	.	.	.
1000 TB to 5000	.	.	.	.	.	.	.	.	.	.

## References



Sheathed heating elements (DN112 flange to be paired: see references in the table below)  
Compatible with all openings

Corflex, SM1/SNC flexible jackets or TM0 steel jackets

Sheathed heating element kits	Voltage	Ref.
5 kW sheathed heating element	Three-phase 230/400V 3~	029 405
10 kW sheathed heating element	Three-phase 230/400V 3~	029 406
15 kW sheathed heating element	Three-phase 230/400V 3~	029 407
25 kW sheathed heating element	Three-phase 230/400V 3~	029 408
30 kW sheathed heating element	Three-phase 400V 3~	029 419

Provide a contactor relay and a safety valve (not supplied).



Steatite heating elements (specific DN150 or DN210 flange automatically paired)  
Compatible with Low position flange only U

Flange + steatite heating element kits	Voltage	Corflex, M1/NC flexible jackets	Corflex, TM0 steel jackets
		Ref.	Ref.
4.8 kW steatite heating element + DN150 flange	Three-phase 230/400V 3~	029 715	029 830
9 kW steatite heating element + DN150 flange		029 716	029 831
12 kW steatite heating element + DN150 flange		029 717	029 832
18 kW steatite heating element + DN210 flange		029 718	029 833
24 kW steatite heating element + DN210 flange		029 719	029 834

Provide a contactor relay and a safety valve (not supplied).

# Corflex

## Modular calorifier

### Performance

Heat-up times by model according to total installed electrical power															
Models	Electrical power (Estimated heat-up time for storage at 60°C and cold water at 10°C)														
	Steatite heating elements					Sheathed heating elements									
	4.8 kW	9 kW	12 kW	18 kW	24 kW	5 kW	10 kW	15 kW	25 kW	30 kW	20 kW	35 kW	40 kW	45 kW	50 kW
500	6 hrs 15 mins					6 hrs	✓			✓	✓	✓	✓	✓	✓
750	✓	5 hrs				✓	4 hrs 30 mins	✓	✓	✓	✓	✓	✓	✓	✓
900	✓	6 hrs				✓	5 hrs 30 mins	3 hrs 30 mins	✓	✓	✓	✓	✓	✓	✓
1000	✓	6 hrs 30 mins	5 hrs			✓	6 hrs	4 hrs	✓	✓	✓	✓	✓	✓	✓
1500	✓	✓	7 hrs 30 mins	5 hrs	3 hrs 30 mins	✓	8 hrs 30 mins	6 hrs	3 hrs 30 mins	✓	4 hrs 30 mins	✓	✓	✓	✓
2000	✓	✓	✓	6 hrs 30 mins	5 hrs	✓	✓	8 hrs	4 hrs 45 mins	4 hrs	6 hrs	3 hrs 30 mins	✓	✓	✓
2500	✓	✓	✓	8 hrs 15 mins	6 hrs 15 mins	✓	✓	✓	6 hrs	5 hrs	7 hrs 30 mins	4 hrs 45 mins	3 hrs 45 mins	3 hrs 15 mins	✓
3000	✓	✓	✓	✓	7 hrs 30 mins	✓	✓	✓	7 hrs 15 mins	6 hrs	✓	6 hrs	4 hrs 30 mins	4 hrs	3 hrs 30 mins
4000	✓	✓	✓	✓	✓	✓	✓	✓	✓	8 hrs	✓	7 hrs 15 mins	6 hrs	5 hrs 30 mins	4 hrs 30 mins
5000	✓	✓	✓	✓	✓	✓	✓	✓	✓	✓	✓	✓	7 hrs 30 mins	6 hrs 30 mins	6 hrs

\* Only available for the 1000 TB model. ✓ Compatible   Recommended pairings.   Incompatibility.

at least two heating elements



Heat-up time with one or more heating elements (at least two from 35 kW). See available heating element kits.

Volume heated* (L) by model depending on the position of the heating elements															
Models	500	750	900	1000	1000 TB	1500	1500 TB	2000	2500	2500 TB	3000	3000 TB	4000	5000	
<b>Angled sheathed heating elements from 5 to 25 kW</b>															
● High Flange	190	245	245	245	441	441	755	797	833	1,148	875	1,288	1,350	1,350	
● Inter Flange	320	397	489	524	567	868	755	1,280	1,497	1,148	1,836	1,704	2,467	2,967	
● Manhole	-	557	692	810	728	1,134	1,041	1,566	2,001	1,708	2,514	2,090	3,090	4,089	
● Low Flange	484	716	851	970	889	1,295	1,292	1,817	2,252	2,069	2,765	2,452	3,585	4,584	
<b>Straight sheathed heating elements from 30 kW</b>															
● High Flange	141	168	168	168	317	317	562	604	640	869	682	1,010	969	969	
● Inter Flange	271	320	412	446	444	744	562	1,087	1,304	869	1,642	1,426	2,087	2,586	
● Manhole	-	480	615	733	604	1,010	848	1,373	1,808	1,429	2,321	1,812	2,710	3,709	
● Low	435	639	774	892	765	1,171	1,099	1,624	2,059	1,791	2,572	2,174	3,204	4,203	
<b>Straight steatite heating elements from 4.8 to 24 kW</b>															
● Low	445	635	770	888	759	1,165	1,089	1,615	2,049	1,777	2,635	2,264	3,328	4,327	

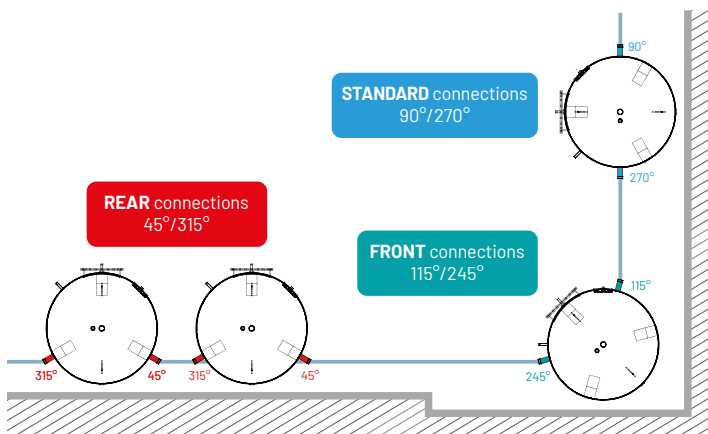
\* Volume of water actually available above the lowest point of the heating element.

## 4 CHOICE OF ORIENTATION OF CONNECTIONS

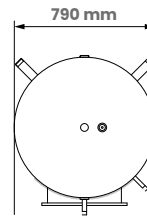
With Corflex, you can change the orientation of the tank's four side connections towards the rear or the front.

**By default: the cylinder will be fitted with standard connections (90°/270°) ●.**

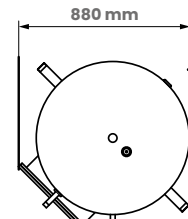
Rear (45°/315°) ●	Front (115°/245°) ●
Ref.	Ref.
029 606	029 608
<b>Not compatible on:</b> <ul style="list-style-type: none"> <li>• DHW Corflex fitted with a flange + steatite heating element</li> <li>• Corflex with TMO steel jacket</li> </ul>	<b>Not compatible on:</b> <ul style="list-style-type: none"> <li>• DHW Corflex fitted with a flange + steatite heating element</li> <li>• Primary Corflex fitted with a low flange (with or without heating element)</li> <li>• 750 to 1,000 L primary Corflex fitted with an intermediate flange + manhole</li> <li>• Corflex with TMO steel jacket</li> </ul>



**Tip:** If you have accessibility constraints that prevent you from passing widthwise with a standard cylinder, consider the "rear connection" solution. For example, the minimum width of a 1,000 L Corhydro fitted with a manhole is 880 mm. For a 1,000 L DHW Corflex fitted with a manhole and rear connections, the minimum width is 790 mm.



Rear connections



Standard connections

Passageway dimensions																
Orientation of connections	Opening	Models														
		500	750	900	1000	1000 TB	1500	1500 TB	2000	2500	2500 TB	3000	3000 TB	4000	5000	
<b>Primary Corflex</b>																
FRONT OR STANDARD connection	None	650	790	790	790	1,000	1,000	1,250	1,250	1,250	1,500	1,250	1,500	1,750	1,750	
	Flange	680	795	795	795	1,015	1,015	1,265	1,265	1,265	1,515	1,265	1,515	1,760	1,760	
	MH	-	880	880	880	1,055	1,055	1,270	1,270	1,270	1,510	1,270	1,510	1,760	1,760	
REAR connection	None/Flange/MH	675	790	790	790	1,000	1,000	1,250	1,250	1,250	1,500	1,250	1,500	1,750	1,750	
<b>DHW Corflex</b>																
FRONT OR STANDARD connection	Flange	680	795	795	795	1,015	1,015	1,265	1,265	1,265	1,515	1,265	1,515	-	-	
	MH	-	880	880	880	1,055	1,055	1,270	1,270	1,270	1,510	1,270	1,510	-	-	
REAR connection	Flange/MH	675	790	790	790	1,000	1,000	1,250	1,250	1,250	1,500	1,250	1,500	-	-	

TB: Low models. MH: manhole