

O'Pro +



ELECTRIC WATER HEATER

Models 30 to 120
(Vertical wall-mounted)

Models 50 to 100
(Horizontal wall-mounted)



Comfort

- Optimised water inlet diffuser distributes the water gradually supplying a larger amount of hot water



Durability

- Extended tank lifetime thanks to O'Pro exclusive anti-corrosive system
- Magnesium anode to bolster tank protection
- Diamond-quality glass lining
- Pressure relief valve
- Dielectric union
- Specific lip gasket to avoid corrosion around the flange



Installation

- Models available for both horizontal and vertical installation

Safe operation:

- IP 24 - full compliance with European standards for electrical safety and user protection



Energy savings

- High-efficiency water inlet
- CFC-free high-density insulation to increase energy savings

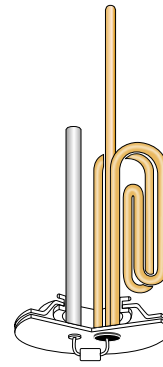
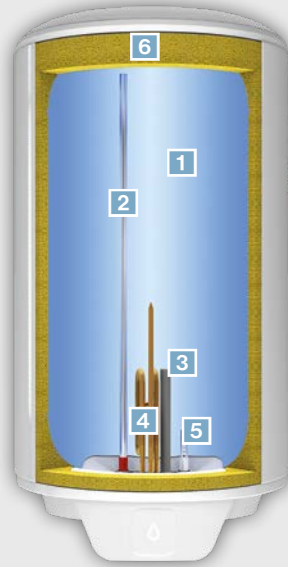


User-friendly

- White and square-shaped thermometer
- Control knob on the bottom of the tank
- Waterdrop heating light indicator



- 1 **DIAMOND-QUALITY GLASS LINING** for extended life and increased reliability
- 2 Optimised stainless steel
- 3 **MAGNESIUM ANODE** for protection against corrosion
- 4 Sheathed immersion heating element
- 5 Inlet diffuser
- 6 High-density, 0% CFC polyurethane foamC



O'Pro
TECHNOLOGY

Exclusive anti-corrosive system

O'Pro technology uses an ohmic resistor to balance out the electric potential of both the tank and the heating element. This prolongs the life of the magnesium anode as well as bolstering protection against corrosion.

Video:



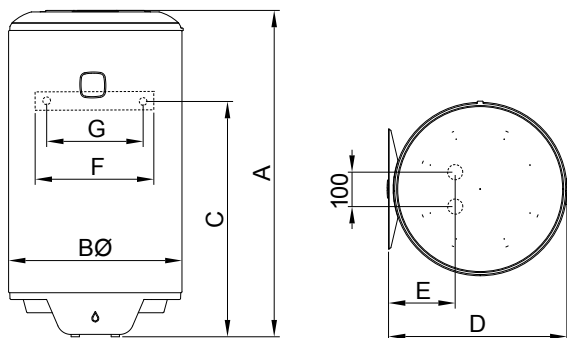
Technical specifications

Model	Ref.	Output (W)	Voltage (V)	Standby losses kWh/24 h at 65°C	V40 (L)	Heat-up time at 60°C (Δt=50°C)	Profile	ESMA energy efficiency
O'Pro+ Vertical wall-mounted								
30	831250	1200	220-240	0.70	36	1h35	S	★★★★★
50	841371	2000	220-240	0.92	77	2h07	M	★★★★★
80	851416	2000	220-240	1.37	100	3h11	M	★★★★★
100	861385	2000	220-240	1.78	136	4h15	L	★★★★
120	861386	2000	220-240	2.02	144	5h06	L	★★★★
O'Pro+ Horizontal wall-mounted								
50	843051	1500	220-240	1.01	69	1h55	M	★★★★★
80	853079	1500	220-240	1.38	113	2h52	M	★★★★★
100	863084	1500	220-240	1.78	131	3h50	L	★★★★

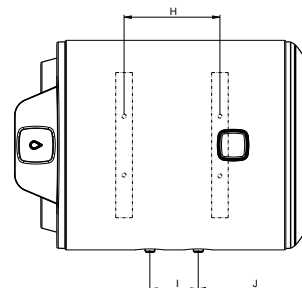
CE ENEC IP 24

Installation dimensions (mm)

Model	Ref.	Dimensions (mm)										Flange opening (∅) mm	Net weight (kg)	
		A	B	C	D	E	F	G	H	J				
O'Pro+ Vertical wall-mounted														
30	831250	443	433	261	450	158	300	240					78	11.6
50	841371	607	433	395	450	158	300	240					78	15.2
80	851416	806	433	605	450	158	300	240					78	19.7
100	861385	1008	433	747	450	158	300	240					78	23.5
120	861386	1139	433	930	450	158	300	240					78	28.4
O'Pro+ Horizontal wall-mounted														
50	843051	607	433	395	450	158	300	240	198	235			78	15.2
80	853079	806	433	605	450	158	300	240	349	335			78	19.7
100	863084	1008	433	747	450	158	300	240	497	436			78	28.4



VERTICAL WALL-MOUNTED



HORIZONTAL WALL-MOUNTED