

Expert

PROVIDES FAST AND CONSTANT FLOW OF HOT WATER THROUGH HIGH POWER OUTPUT ELEMENT

Models 50 to 100 (vertical wall-mounted)



BENEFITS

- Fast heat-up time thanks to 2000W heating element output
- Long tank lifetime thanks to O'Pro exclusive anti-corrosive system
- Easy to use: heating light indicator and temperature control knob with eco mode
- Easy to use: regulation front knob with eco position



+ EASY PROGRAMMING WITH DIGITAL CONTROL PANEL



WATERDROP LED INDICATOR



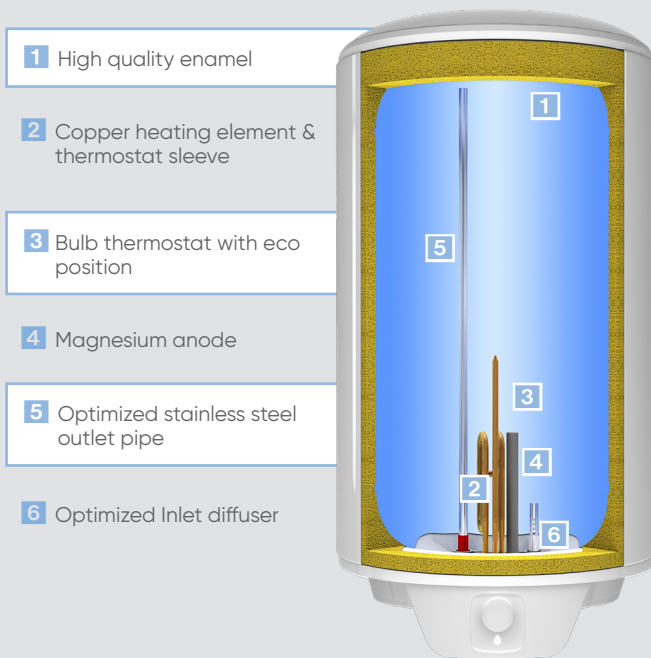
Easy-to-use:

The newly designed waterdrop led heating indicator allows you to know when your water is heating

Expert

Models 50 to 100 (vertical wall-mounted)

+ PROVEN QUALITY WITH O'PRO TECHNOLOGY



- 1 High quality enamel
- 2 Copper heating element & thermostat sleeve
- 3 Bulb thermostat with eco position
- 4 Magnesium anode
- 5 Optimized stainless steel outlet pipe
- 6 Optimized Inlet diffuser

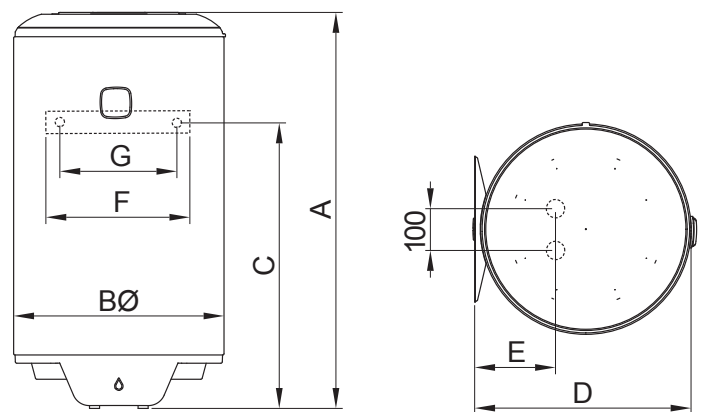
O'Pro TECHNOLOGY

EXCLUSIVE ANTI-CORROSIVE SYSTEM

O'Pro technology uses an ohmic resistor. It balances out the electric potentials of both the tank and the heating element. Thus, the magnesium anode life is considerably increased and protection against corrosion is reinforced.

Installation dimensions

Model	Dimensions (mm)							Flange opening (Ø) mm	Net weight (kg)
	A	B	C	D	E	F	G		
Vertical wall-mounted									
50	607	433	395	450	158	300	240	72	15,2
80	806	433	605	450	158	300	240	72	19,7
100	1008	433	747	450	158	300	240	72	23,5



Technical data

Model	Output (W)	Voltage (V)	QPR (kWh/24)	V40 (L)	Heating time	Profile	Erp energy class
Vertical wall-mounted							
50	2000	220-240	1,01	81	1h35	M	C
80	2000	220-240	1,35	124	2h23	M	C
100	2000	220-240	1,63	174	3h11	L	C