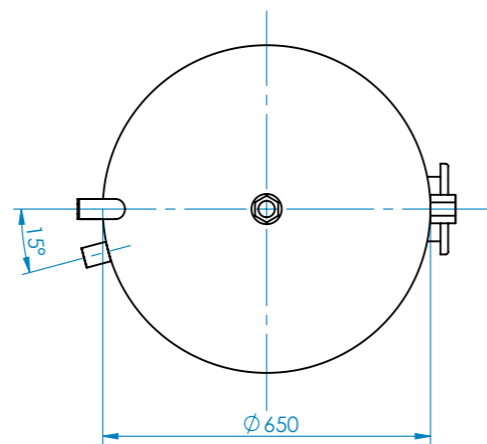
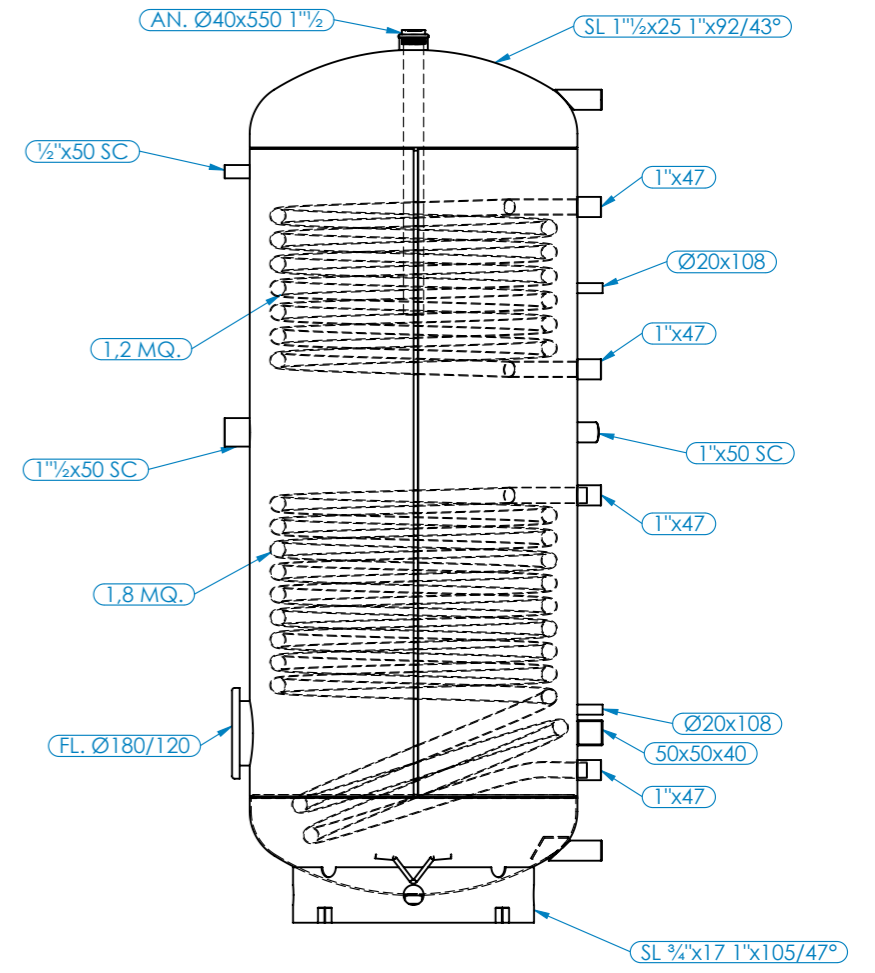
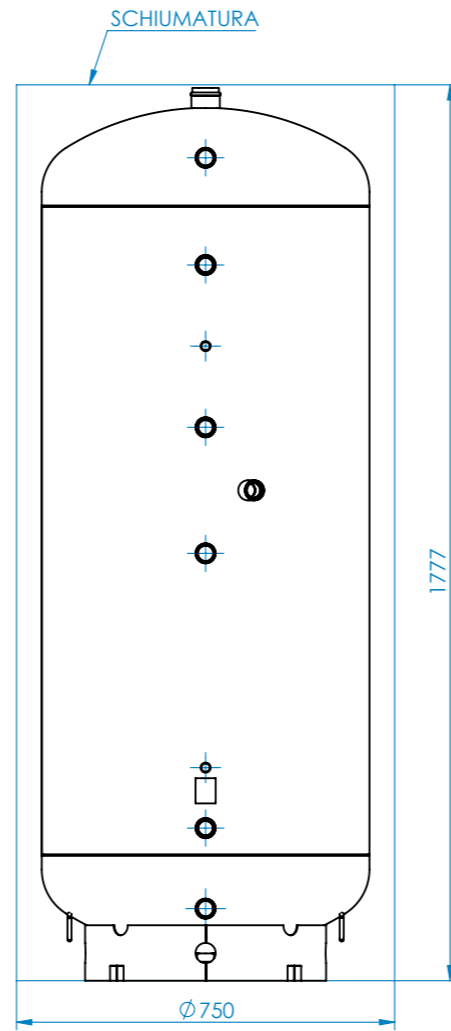
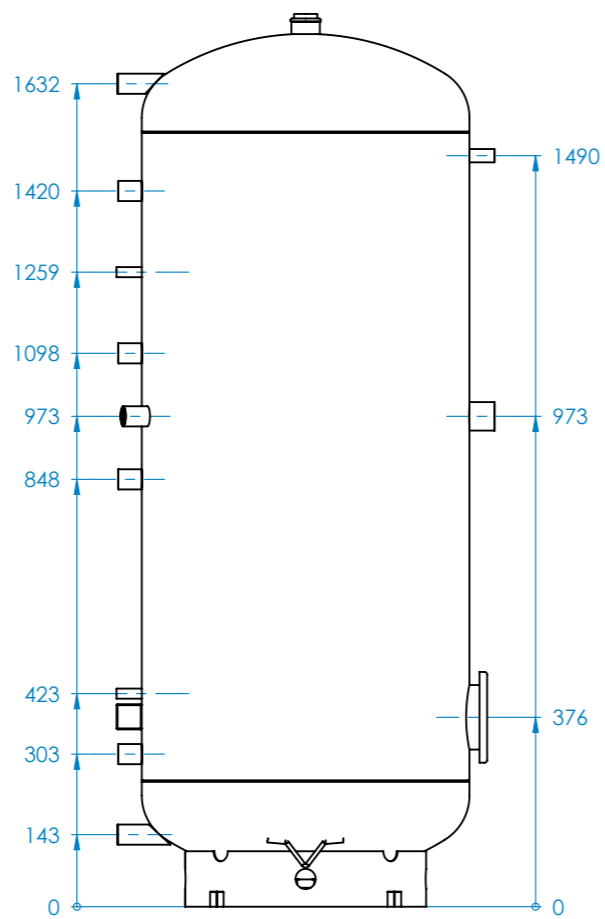
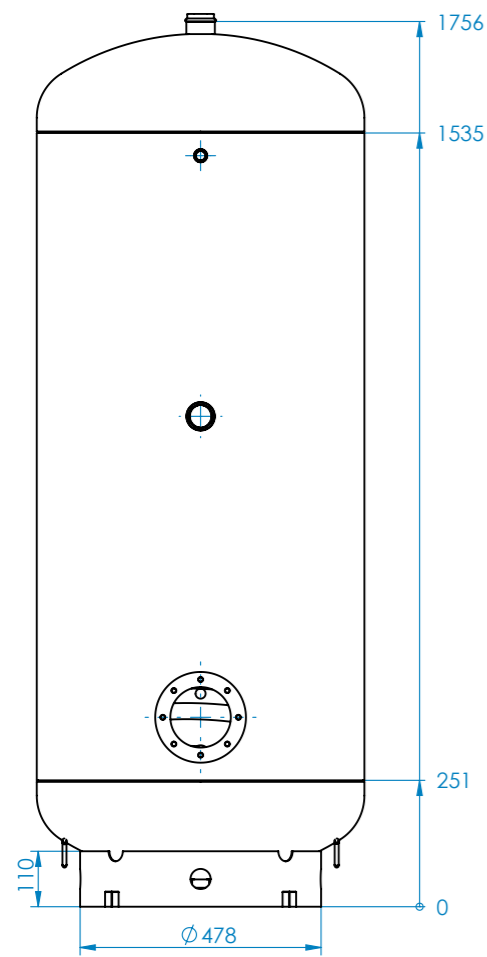


Tabella Distinta materiali

N.	CODICE	DESCRIZIONE	Q
1	ANODO40550.00	ANODO MAGNESIO D40 L550 TAPPO 1"1/2	1
2	FLADE180DI120.02	FLANGIA 180x120 INT.FORI 150 SP4 H 55 8 FORI M10 DRITTA	1
3	SLF0650E30B6F.18	FONDO Ø650 E 30/10 BORDATO + 1"1/2x25 + 1"x92/43" LATERALE	1
4	SLF0650E30B6F.17	FONDO Ø650 E 30/10 BORDATO + 3/4"x17 + 1"x105/47" LATERALE + FASCIA SCHIUMATURA + M10	1
5	LAMDR12842033.30	LAMIERA DECAPATA RIFILATA 1284x2033x3 DD11	1
6	MAN1P1_2050.02	MANICOTTO 1"1/2x50 De56,5 SCARICATO LUNG FIL 13	1
7	MAN1P050.02	MANICOTTO 1"x50 De40 SCARICATO LUNG FIL 13	1
8	MAN1P047.03	MANICOTTO 1"x47 De40 LUNG.FILETTO 20	4
9	MAN1_2P050.02	MANICOTTO 1/2"x50 De26,4 SCARICATO LUNG FIL 13	1
10	TUBT020.00	POZZETTO TUBO Ø20 SP2mm L108mm	2
11		ROMPIFLUSSO SANITARI INFERIORE	1
12	SLS570.545.18.01	SERPENTINA INFERIORE 500LT SANITARI 180°	1
13	SLS570.322.12.01	SERPENTINA SUPERIORE 500LT SANITARI 180°	1
14	TUBQ050.01	TUBO QUADRO 50x50 SP2mm	1



P max **6 bar** P test **10 bar** T max **95°C** T min **---** Peso **138.63 Kg**