

Technical submittal

Products: **Stratton mk3 S3-40, S3-60, S3-70**

Project:

Customer:

Date:

- ⊙ 7 models available with 40, 60, 70, 80, 100, 120, 150kW output models
- ⊙ Wall hung condensing boiler
- ⊙ Stainless steel heat exchanger for added durability
- ⊙ Low height for tight plantrooms
- ⊙ Up to 5:1 turndown ratio
- ⊙ Up to 97% gross seasonal efficiency
- ⊙ NOx class 6
- ⊙ Single units can be cascaded for larger installations
- ⊙ Advanced sequence control for up to 16 boiler modules
- ⊙ Easy access for service and system cleaning
- ⊙ Connections in recess at base of the boiler
- ⊙ Suitable for natural gas (all sizes) and LPG (up to 120kW) applications
- ⊙ Full range of hydraulic separation options available
- ⊙ Room sealed options



	Units	S3-40	S3-60	S3-70	
Energy	Building Regulations Part L seasonal efficiency	% gross	95.7	95.5	95.6
	ErP efficiency rating		A	A	A
	Maximum boiler output (80-60 Deg C, NG & LPG)*	kW	38.8	53.4	67.8
	Maximum boiler output (50-30 Deg C, NG & LPG)*	kW	42.2	58	73.6
	Minimum boiler output (80-60 Deg C, NG & LPG)*	kW	8	11	14
Water	Standby losses	W	52	54	56
	Water content	litres	3	4	4.5
	Nominal water flow rate	l/sec	0.48	0.66	0.83
	Minimum water flow rate	l/sec	0.16	0.32	0.32
	System design flow rate @ 11 Deg C rise	l/sec	0.87	1.19	1.52
	Water pressure loss @ 11 Deg C rise	mBar	1539	1560	1890
	System design flow rate @ 20 Deg C rise	l/sec	0.48	0.72	0.84
	Water pressure loss @ 20 Deg C rise	mBar	459	470	520
	System design flow rate @ 25 Deg C rise	l/sec	0.38	0.52	0.67
	Water pressure loss @ 25 Deg C rise	mBar	223	305	306
	Minimum water pressure (cold)	barg	1	1	1
	Maximum water pressure	barg	4	4	4
	Maximum flow temperature	Deg C	85	85	85
	Gas	Maximum gas inlet pressure (NG)	mBar	25	25
Nominal gas inlet pressure (NG)		mBar	20	20	20
Minimum gas inlet pressure (NG)		mBar	17	17	17
Maximum gas inlet pressure (LPG)		mBar	45	45	45
Nominal gas inlet pressure (LPG)		mBar	37	37	37
Minimum gas inlet pressure (LPG)		mBar	25	25	25
Maximum gas flow rate (NG)		m3/hr	4.2	5.8	7.4
Maximum gas flow rate (LPG)	m3/hr	1.6	2.3	2.9	
Flue	Maximum flue gas temperature (80-60 Deg C, NG)	Deg C	79	75.5	74.5
	Dry Nox emission (0% excess oxygen, dry air free)	mg/kWh	36	39	39
Elec	Electrical supply		230V AC/50Hz	230V AC/50Hz	230V AC/50Hz
	Power consumption (at maximum modulation)	W	67	107	121
Misc	Approx. shipping weight (empty)	kg	45	51	55
	Noise emission @ 1M (maximum modulation)	db (A)	50	59	60.2

Every effort has been taken to ensure the details are accurate. Hamworthy Heating does not, however, guarantee the accuracy or completeness of any information nor does it accept liability for any errors or omissions in the information. Hamworthy Heating reserves the right to make changes and improvements which may necessitate alteration to product specification without prior notice.



Technical submittal

Products: **Stratton mk3 S3-40, S3-60, S3-70**

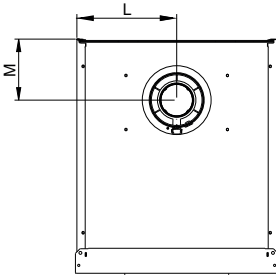
Project:

Customer:

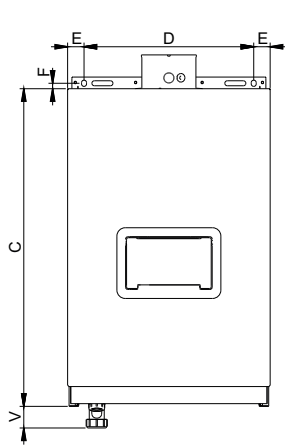
Date:

Stratton mk3 S3-40, S3-60, S3-70

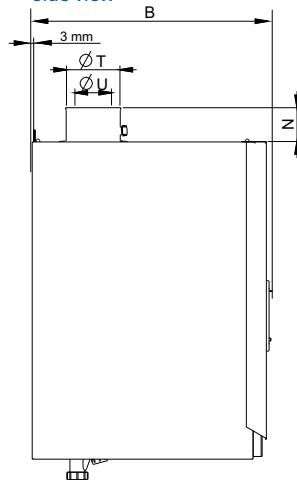
Plan view



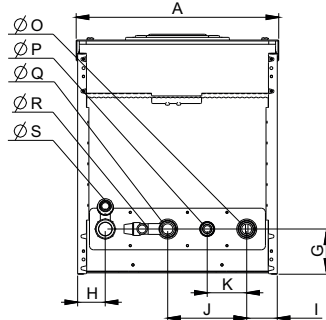
Front view



Side view



Underside view



Dimensions

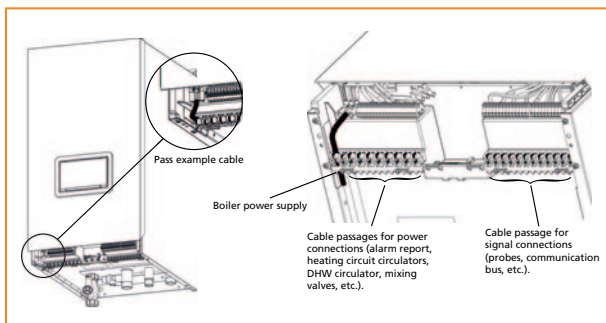
		Boiler Models in kW		
		S3-40	S3-60	S3-70
A	Boiler width	(mm)	487	
B	Boiler depth	(mm)	577	
C	Boiler height	(mm)	764	
D	Fixing centers	(mm)	408	
E	Distance of fixings to side of boiler	(mm)	36	
F	Fixing point centers above top of casing	(mm)	17	
G	Center of connections to rear of boiler	(mm)	108,5	
H	Center of siphon outlet to side casing	(mm)	66,5	
I	Center of return connection from casing side	(mm)	73,5	
J	Centers between flow and return connections	(mm)	190	
K	Centers between gas inlet and return connection	(mm)	95	
L	Center of flue from side	(mm)	240	
M	Center of flue from rear	(mm)	146,5	
N	Flue connection socket height	(mm)	83	
Ø O	Return connection		G 1" ¼	
Ø P	Gas inlet connection		G 1"	
Ø Q	Flow connection		G 1" ¼	
Ø R	Pressure relief valve		G ½" (female)	
Ø S	Condensate outlet	(mm)	24	
Ø T	Air inlet	(mm)	125	
Ø U	Flue duct	(mm)	80	
V	Siphon outlet from the bottom of the casing	(mm)	52	

Clearances

Recommended Clearance – All Models

Front: 800mm Sides: 250mm* Top: Dependent on flue choice

* Side clearance is preferred but not compulsory.



Every effort has been taken to ensure the details are accurate. Hamworthy Heating does not, however, guarantee the accuracy or completeness of any information nor does it accept liability for any errors or omissions in the information. Hamworthy Heating reserves the right to make changes and improvements which may necessitate alteration to product specification without prior notice.