

WESSEX MODUMAX 100 SERIES WATER MANIFOLD KITS

**For Multiple 110/220, 110/330,
120/240 & 120/360 Boilers**

Valved Water Manifold Kits

INSTALLATION INSTRUCTIONS

**NOTE: THESE INSTRUCTIONS SHOULD BE READ
AND UNDERSTOOD BEFORE ATTEMPTING
TO INSTALL, COMMISSION OR OPERATE THIS UNIT!**

THESE INSTRUCTIONS MUST BE READ IN CONJUNCTION WITH
THE WESSEX MODUMAX 110 / 120
INSTALLER'S GUIDE (HHL Part No. 500001296)

**PUBLICATION NO. 500005117
ISSUE 'C'
April 2014**

CONTENTS	PAGE
Front Page	i
Contents	ii
1.0 GENERAL INSTRUCTIONS	1
2.0 ASSEMBLY	2
 TABLES: -	
1a Wessex ModuMax 110/220, 120/240 Kit of Parts	1
1b Wessex ModuMax 110/330, 120/360 Kit of Parts	1
 FIGURES: -	
1 Water Manifold Assembled - General Overview 2 High	2
2 Water Manifold Assembled - General Overview 3 High	2
3 Boiler to Manifold Assembly Spacing	3
4 Swivel Foot Adjustment	3
5 100 Series 2 High Dimensions	4
6 100 Series 3 High Dimensions	5

1.0 GENERAL INSTRUCTIONS

These instructions MUST be read in conjunction with the Wessex ModuMax 110, 120 Installer's Guide (HHL Part No. 500001296).

SAFETY NOTE: All safety instructions referred to in the Installer's Guide must be adhered to, and a competent person must carry out all works referred to in this instruction.

These water manifold kits are specifically for use with Wessex ModuMax series boilers.

All manifold components are pressure tested prior to despatch.

NOTE: This water manifold kit is intended for use as reverse-return. However, should the manifold flow and return connections terminate on the same side, ensure that system design water flow rates are achieved through each boiler module.

1.1 Delivery

Remove all packing material and, referring to Table Nos. 1a & 1b, inspect the equipment to ensure that all parts are present and undamaged.

If in any doubt, DO NOT USE THE EQUIPMENT. Instead, contact HHL Technical Department.

Table No. 1a—WESSEX MODUMAX 110/220, 120/240 - WATER MANIFOLD KIT

HHL Part No.	Description	Qty
562702286	2 Point Water Manifold Assembly	1
562702290	Valve and Hose Assembly	4
563605295	Bag of Fasteners, comprising of:	
	M16 x 70 Hex Head Bolts	16
	M16 Spring Washers	16
	M16 Full Nuts	16
	Flange Gasket (531201133)	2

Table No. 1b—WESSEX MODUMAX 110/330, 120/360 - WATER MANIFOLD KIT

HHL Part No.	Description	Qty
562702287	3 Point Water Manifold Assembly	1
562702290	Valve and Hose Assembly	6
563605295	Bag of Fasteners, comprising of:	
	M16 x 70 Hex Head Bolts	16
	M16 Spring Washers	16
	M16 Full Nuts	16
	Flange Gasket (HHL Ref: 531201133)	2

Figure No. 1 - WESSEX MODUMAX WATER MANIFOLD KIT - 2 HIGH ASSEMBLED

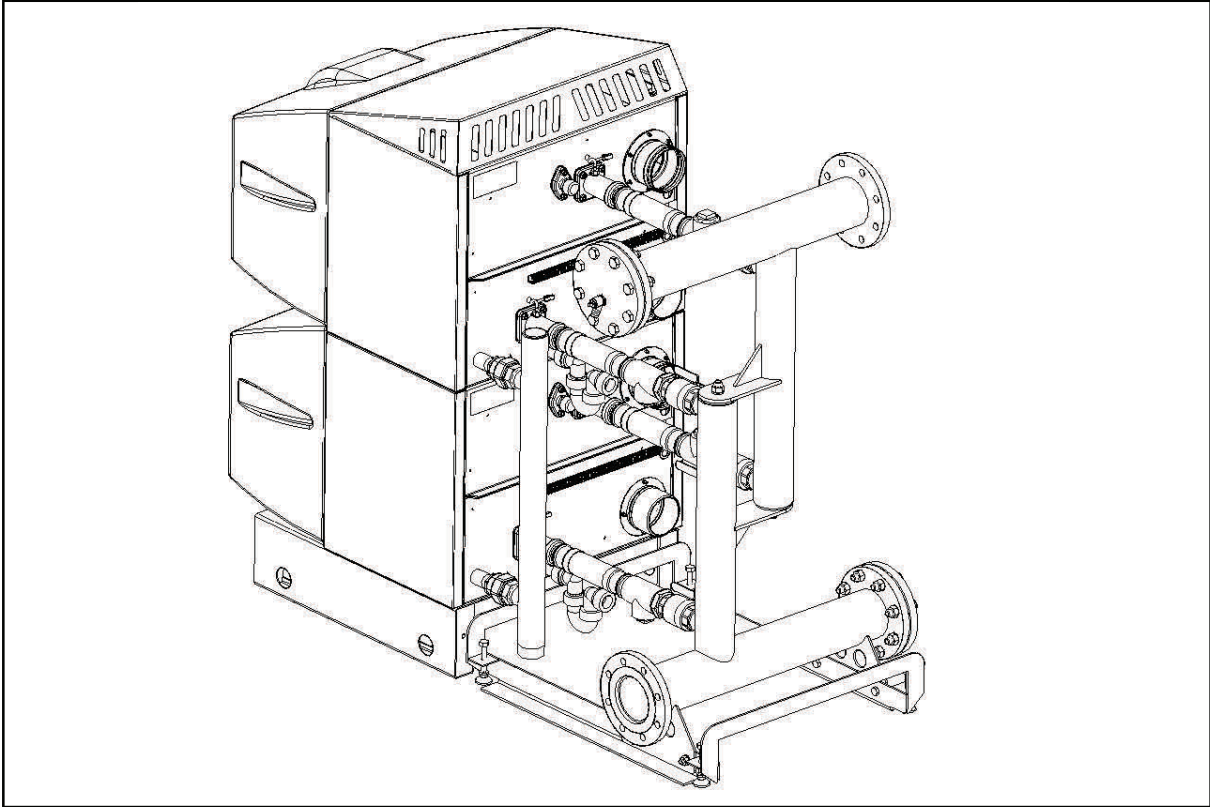
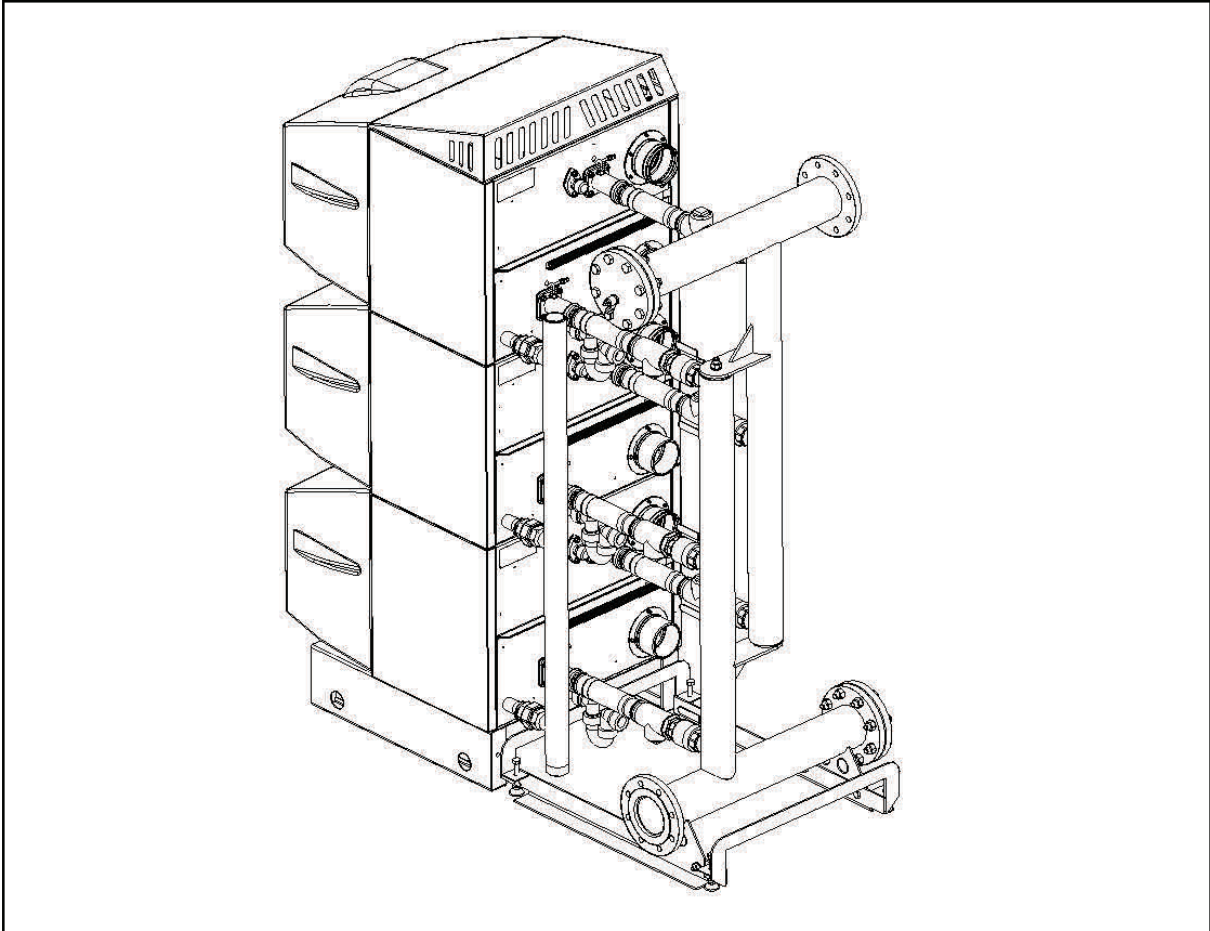


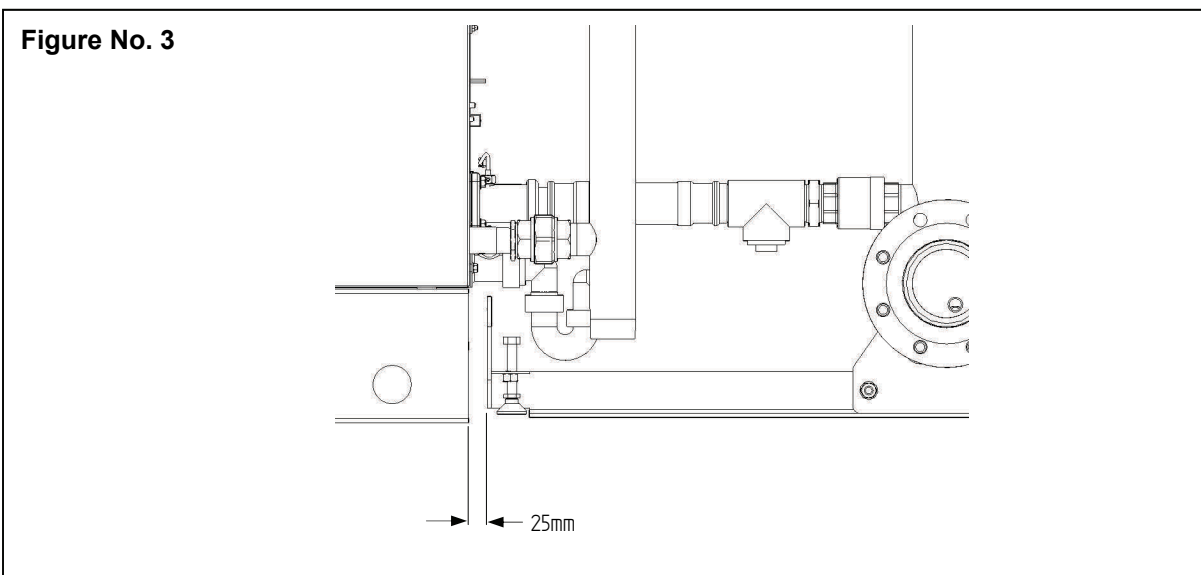
Figure No. 2 - WESSEX MODUMAX WATER MANIFOLD KIT - 3 HIGH ASSEMBLED



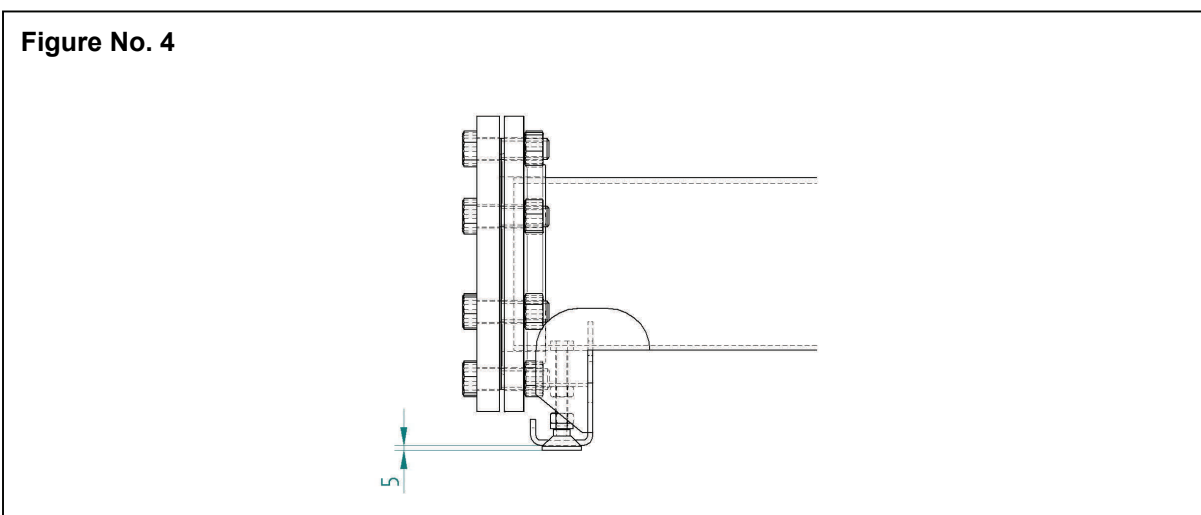
2.0 ASSEMBLY INSTRUCTIONS

2.1.1 Manoeuvre Manifold Assembly to its approximate correct final position in plant room directly behind boiler. See figures 1 or 2 on opposite page.

Note: The base of the manifold has been purposely designed so that a standard pallet truck can be used for manoeuvring purposes. Furthermore, the base of the water manifold does not butt up to the back of the boiler but should be spaced approximately 25mm from it. See Figure 3.



2.1.2 Once assembly has been satisfactorily positioned turn the adjusting screws on the swivel feet (M12 fixings) until the base assembly is raised approximately 5mm from the plant room floor as indicated in Figure 4.



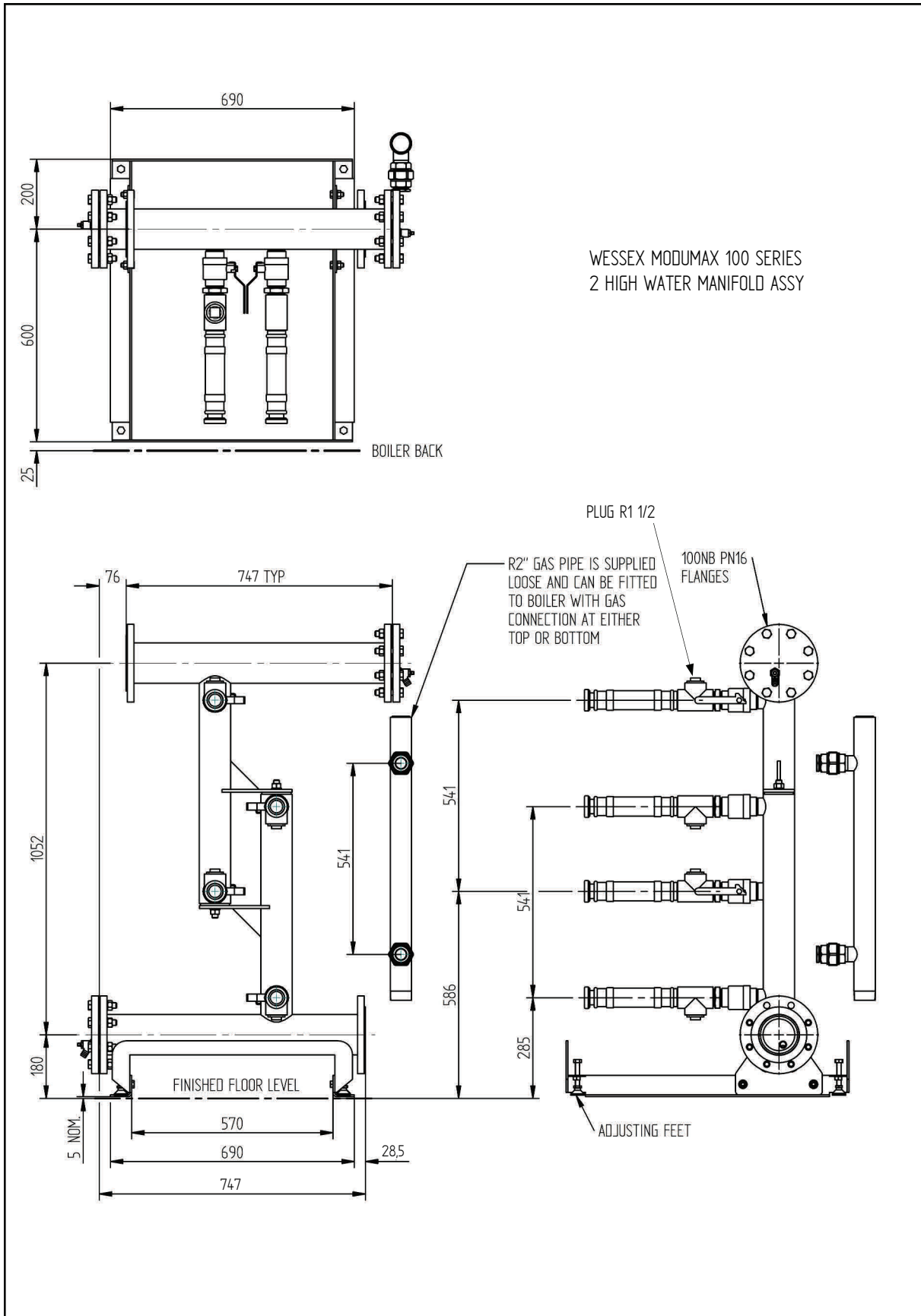
2.1.3 Secure flexible hoses to the 1½” water connections in back of boiler.

2.1.4 Fit one half of 1¼” self aligning unions supplied to the gas connections in back of boiler.

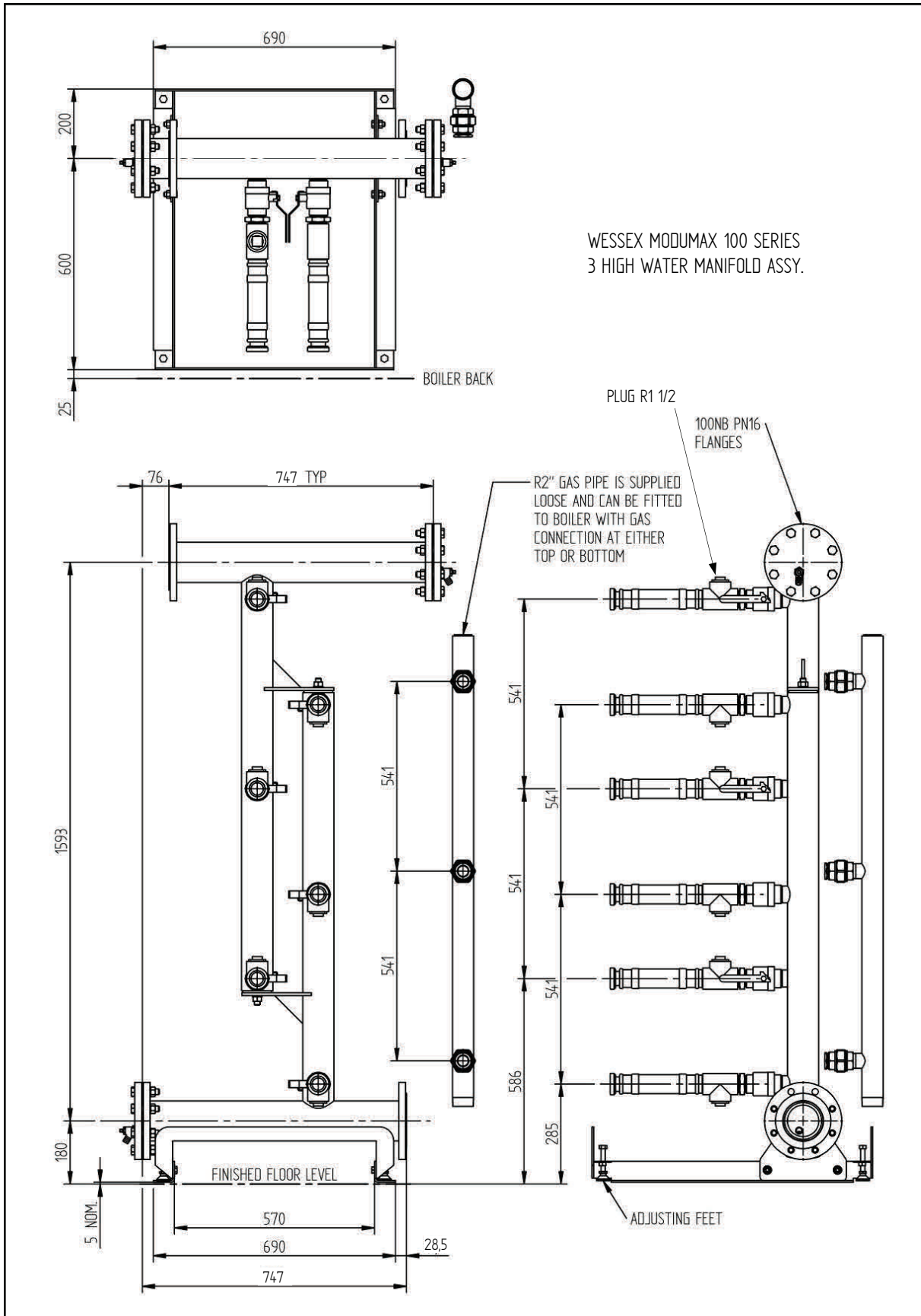
2.1.5 Fit other half of 1¼” self aligning unions to gas pipe supplied with water manifold assembly.

2.1.6 Gas pipe can be orientated so that gas supply can be at top or bottom so choose at which end the gas supply will be fitted then orientate the gas pipe to suit, then secure unions.

2.1.7 If plant room floor is uneven, adjust swivel feet until a satisfactorily level assembly has been achieved.



**Figure 5 - WESSEX MODUMAX 110/220, 120/240 WATER MANIFOLD KIT
(ALL DIMENSIONS IN MILLIMETRES)**



**Figure 6 - WESSEX MODUMAX 110/330, 120/360 WATER MANIFOLD KIT
(ALL DIMENSIONS IN MILLIMETRES)**

NOTES

--

INSTALLER

SITE ADDRESS

--	--