

# Thermor

# AEROMAX PREMIUM

Universality of a state-of-the-art solution with or without coil



## CHARACTERISTICS

### COMFORT

- Possibility to produce hot water with 4 different types of energy (heat pump, electric back-up, boiler and solar)
- Wide heat pump operating temperature range of use (-5 to +43°C)
- Household-friendly noise level
- Comfort thanks to electric back-up
- Recirculation connection to provide comfort on all points-of-use (models with coil only)
- Possibility to tilt on one side for easy transport

### QUALITY - DURABILITY

- ACI hybrid anti-corrosive protection
- Steatite technology: Ceramic dry heating element
- New generation diamond-quality enamel (glass-lined inner tank)
- Pressure relief valve
- Dielectric union
- Specific lip gasket to avoid corrosion around flange

### USER-FRIENDLINESS

- Easy installation with adjustable air inlet/outlet and adjustable feet
- Digital control panel with built-in day-to-day programming, different modes selection, display showing energy consumption
- Compatible with Cozytouch for remote piloting through a smartphone or a tablet
- Easy to set up and to use

### SAVINGS

- Up to 75% energy savings\*
- Compatible with solar (photovoltaic panel or solar collector) and boiler systems (built-in coil)
- Large optimised coil for fast heating and adapted for low temperature devices (models with coil only)
- CFC-free high-density insulation for more energy savings
- High-efficiency water inlet

HEAT PUMP WATER HEATER  
200 TO 270 L  
(Floor-standing)



Models available\*\*\*

Up to  
**75%**  
ENERGY  
SAVINGS\*

Energy savings



Technology



IO-Homecontrol



Cozytouch



Heating  
element



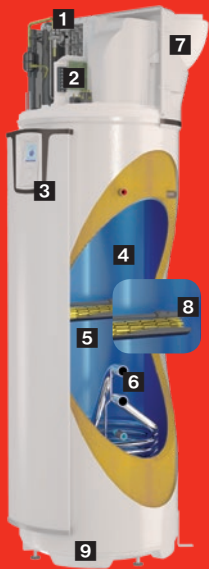
Energy efficiency  
class A\*\*

\* Compared with an electric water heater

\*\* Depending on models

\*\*\* Models available: 1. Vertical wall-mounted - 2. Horizontal wall-mounted - 3. Floor-standing.

[www.thermor-heating.com](http://www.thermor-heating.com)



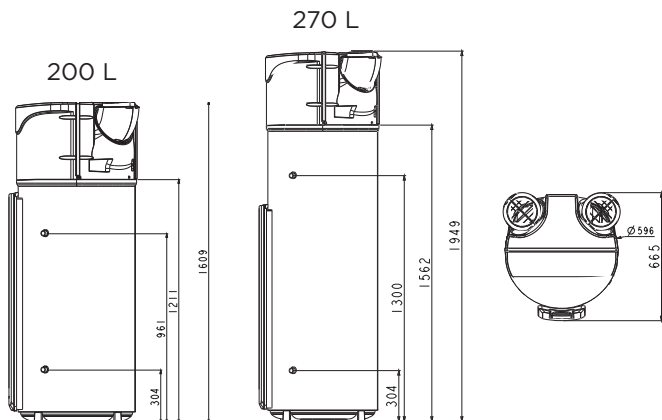
- 1 Evaporator
- 2 High-efficiency heat pump with wide temperature range
- 3 Intuitive control panel
- 4 Diamond-quality enamel
- 5 Enamelled sleeve and Steatite heating element
- 6 Coil (1.2 m<sup>2</sup>):
  - Solar mode
  - Boiler mode
- 7 Adjustable air inlet/outlet (360°)
- 8 ACI hybrid anti-corrosive system with forced current and magnesium anode
- 9 Adjustable feet

## INTUITIVE CONTROL PANEL

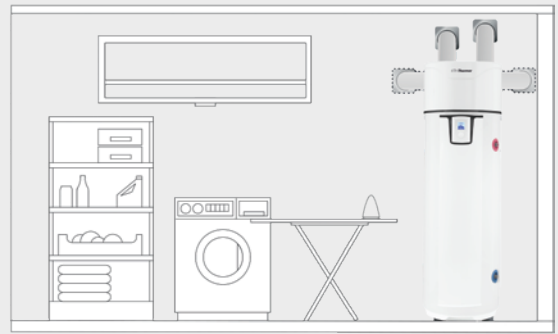


- 1 Menu button with access to general information energy consumption and mode selection (Boost, Auto, Manual, Absence)
- 2 Control knob for temperature adjustments
- 3 Temperature validation button
- 4 Return to previous screen view
- 5 Display graphically showing energy consumption statistics

## INSTALLATION DIMENSIONS (in mm)



## AJUSTABLE AIR INLET / OUTLET



SUITABLE FOR ALL INSTALLATIONS (LOW CEILING, CORNER...)



## TECHNICAL DATA

Capacity (L) (with or without coil)	200	270
Dimensions (mm)	1609x620x665	1949x620x665
Net weight without coil (kg)	85	93
Net weight with coil (kg)	100	108
Tank capacity (L)	200	270
Electric back-up volume (L)	110	130
Rated water pressure (bars)	8	
Electrical connection (V/Hz)	230V~/50Hz	
Maximum total power consumed by the device (W)	2465	
Maximum power consumed by the heat pump (W)	665	
Power consumed by electric heating (W)	1800	
Water temperature range by heat pump (°C)	50 à 62°C	
Heat pump temperature range of use (°C)	-5 à 43°C	
Refrigerant fluid R134a (kg)	1.25	1.35
Intake flow rate (ambient installation) (m <sup>3</sup> /h)	390	
COP at 20°C (ambient) <sup>(1)</sup>	4.1	4.3
COP at 7°C (ambient) <sup>(1)</sup>	2.79	2.84
Acoustic pressure at 2m (dB(A))	37	
Acoustic power (dB(A))	57	
Heating time from 15 to 51°C (ambient installation 15°C air) (H)	4h48	7h32
Coil power (kW) primary 60°C, 1000/1500/2000L/H (kW)	15.5 / 16 / 16.4	
Coil surface (m <sup>2</sup> )	1.2	
Recirculation connection	Available for models with coil	
ERP Energy class	A+	
Profile	L	XL

CE (1) In the conditions of EN16147