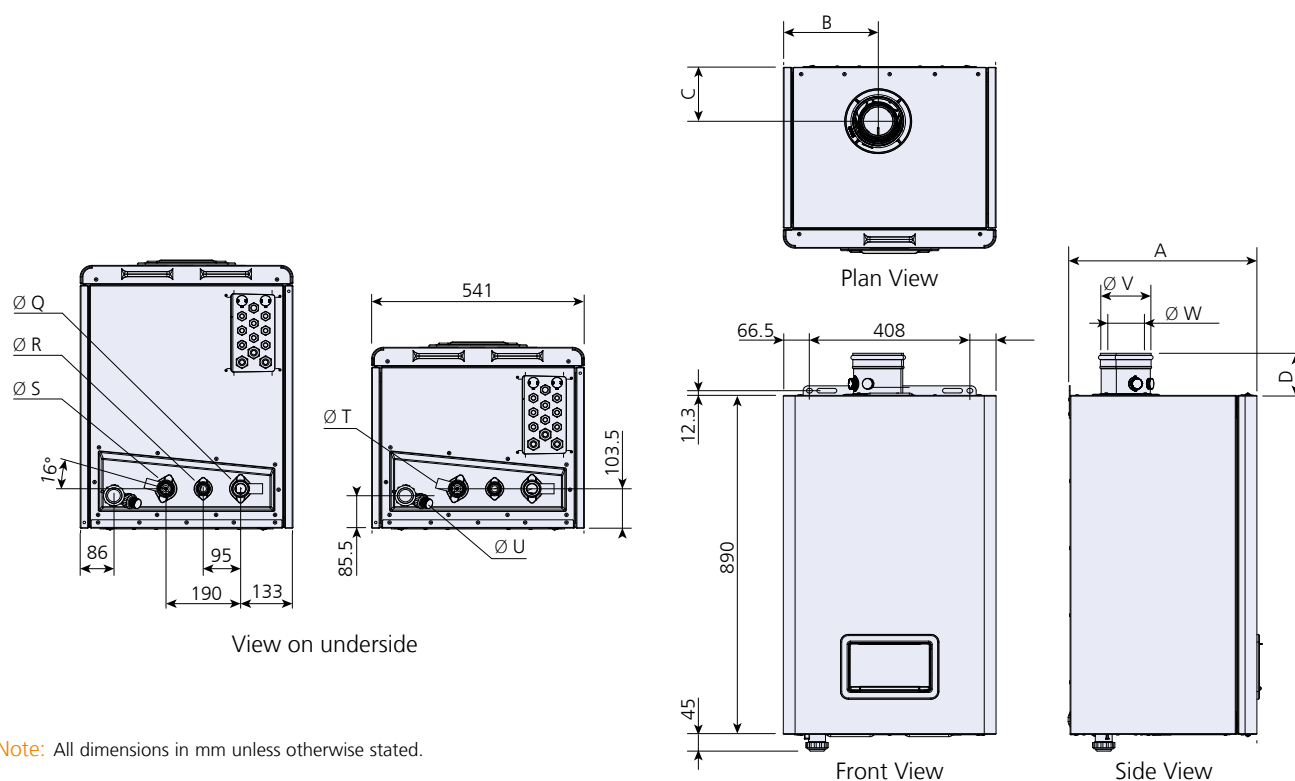


Dimensions

All models



*Note: All dimensions in mm unless otherwise stated.

| | | | Stratton mk2 models | | | | | | |
|------|----------------------------|-------|---------------------|------------------|------------------|------------------|------------------|------------------|------------------|
| Ref. | | Units | S2-40 | S2-60 | S2-70 | S2-80 | S2-100 | S2-120 | S2-150 |
| A | Boiler depth | mm | 477 | 477 | 574 | 574 | 574 | 692 | 800 |
| B | Flue connection centreline | mm | 241 | 241 | 242.5 | 242.5 | 242.5 | 242.5 | 242.5 |
| C | Flue connection centreline | mm | 143.5 | 143.5 | 120 | 120 | 120 | 120 | 120 |
| D | Flue spigot height | mm | 86 | 86 | 111 | 111 | 111 | 111 | 111 |
| Ø Q | Heating return connection | | G 1¼" | G 1¼" | G 1¼" | G 1¼" | G 1¼" | G 1¼" | G 1¼" |
| Ø R | Gas supply | | G 1" | G 1" | G 1" | G 1" | G 1" | G 1" | G 1" |
| Ø S | Heating outlet connection | | G 1¼" | G 1¼" | G 1¼" | G 1¼" | G 1¼" | G 1¼" | G 1¼" |
| Ø T | Safety valve connection | | G ½" (female) | G ½" (female) | G ½" (female) | G ½" (female) | G ½" (female) | G ½" (female) | G ½" (female) |
| Ø U | Condensate drain | mm | 24 | 24 | 24 | 24 | 24 | 24 | 24 |
| Ø V | Air inlet | mm | 125 | 125 | 150 | 150 | 150 | 150 | 150 |
| Ø W | Fume duct | mm | 80 | 80 | 100 | 100 | 100 | 100 | 100 |

Recommended clearances to walls or opposing structures for maintenance

| | Units | S2-40 | S2-60 | S2-70 | S2-80 | S2-100 | S2-120 | S2-150 |
|-------|-------|---------------------------------------|-------|-------|-------|--------|--------|--------|
| Front | mm | 800 | 800 | 800 | 800 | 800 | 800 | 800 |
| Sides | mm | 250 | 250 | 250 | 250 | 250 | 250 | 250 |
| Top | mm | Dependent on flue - see full brochure | | | | | | |

Pipe kit details & dimensions

All models

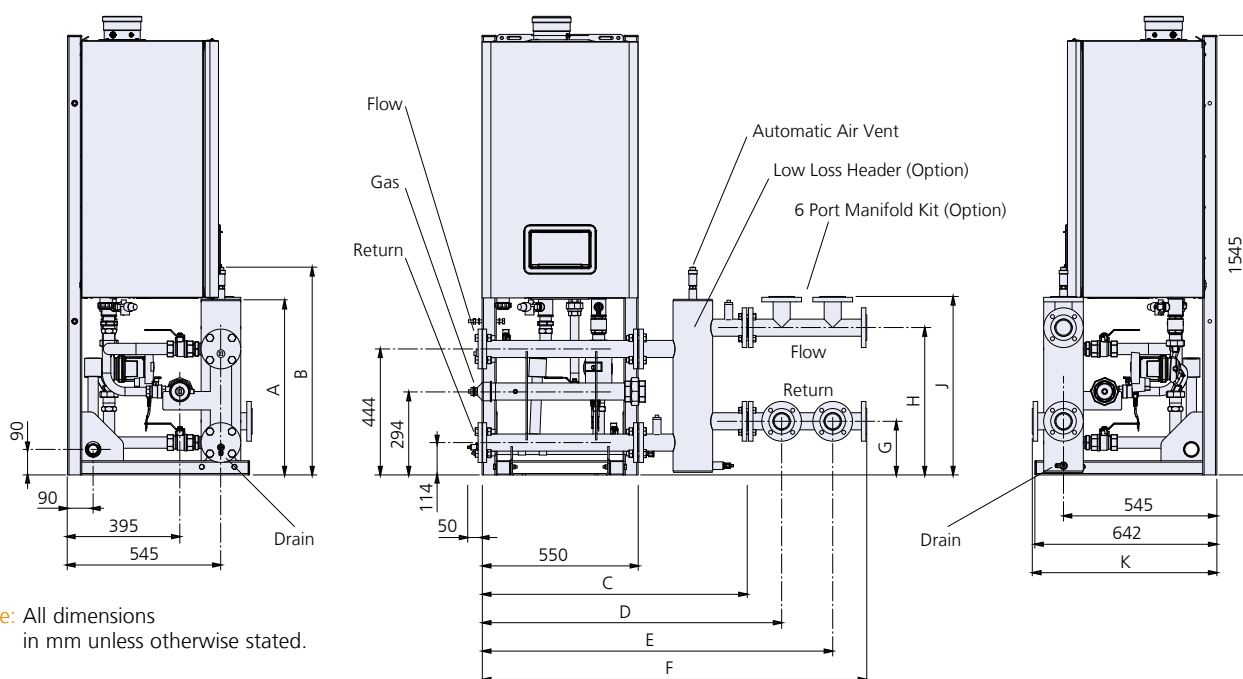
Multiple boiler pipe kits with frame and headers

For multiple boiler installations pipe frame and header sets are available for one to four boilers. Individual mounting frames are provided for each boiler. Header sets are also available for one and two boilers allowing combinations up to four boilers to be installed by simply bolting two header sets together. Pipe kits can be located against a wall or be free standing when using suitable floor tie bolts.

Kits include:

- ⊗ Fully welded boiler mounting frames with holes for wall and floor ties
- ⊗ Simple hook arrangement allowing fast mounting of boilers to frame
- ⊗ DN50 or DN80 flow and return headers – PN06, blank flanges provided
- ⊗ 2" gas header with pressure test point and plugged purge connection
- ⊗ 32mm polypropylene condensate header
- ⊗ Individual boiler isolating valves for water and gas
- ⊗ Non-return valve to prevent reverse circulation through non-firing boiler modules
- ⊗ ErP compliant boiler shunt pumps optimised for 20°C differential temperature
- ⊗ Safety relief valve – 4 bar
- ⊗ Flexible interconnecting pipes between boilers and headers
- ⊗ Optional low loss headers to suit DN50 or DN80 pipe kit assemblies (see page 8)
- ⊗ Optional 6 port extension manifold kit to suit DN50 or DN80 pipe kit assemblies (see page 8)

Single boiler assembly



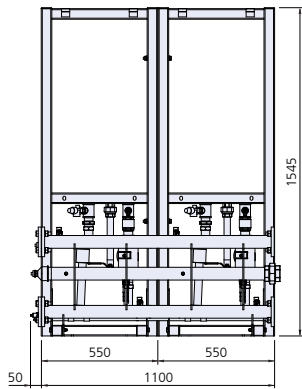
Note: All dimensions in mm unless otherwise stated.

| Boiler models | Flow header | Return header | Gas header | Condensate header |
|----------------------------|-------------|---------------|------------|-------------------|
| S2-40, S2-60, S2-70, S2-80 | DN50 PN06 | DN50 PN06 | R2" | 32mm Poly |
| S2-100, S2-120, S2-150 | DN80 PN06 | DN80 PN06 | R2" | 32mm Poly |

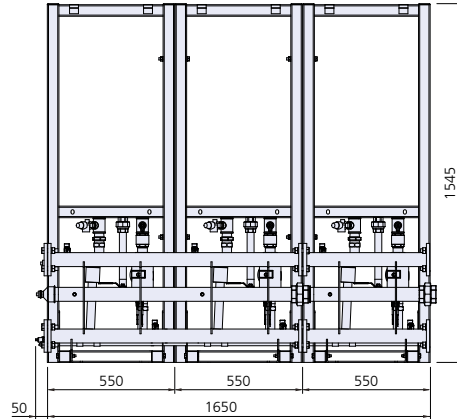
| Boiler models | A | B | C | D | E | F | G | H | J | K |
|----------------------------|-----|-----|------|------|------|------|-----|-----|-----|-----|
| S2-40, S2-60, S2-70, S2-80 | 620 | 735 | 933 | 1056 | 1236 | 1356 | 189 | 519 | 629 | 651 |
| S2-100, S2-120, S2-150 | 720 | 832 | 1010 | 1155 | 1385 | 1530 | 214 | 565 | 684 | 694 |

Note: Hydraulic circuits should never impede circulation through the boilers. The use of a low loss header (optional) is strongly recommended to ensure adequate boiler flow. See page 27 for hydraulic circuit design.

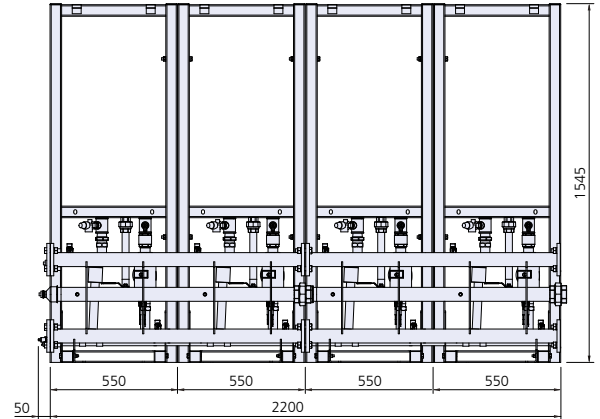
Two boiler assembly



Three boiler assembly



Four boiler assembly



Boiler support frame

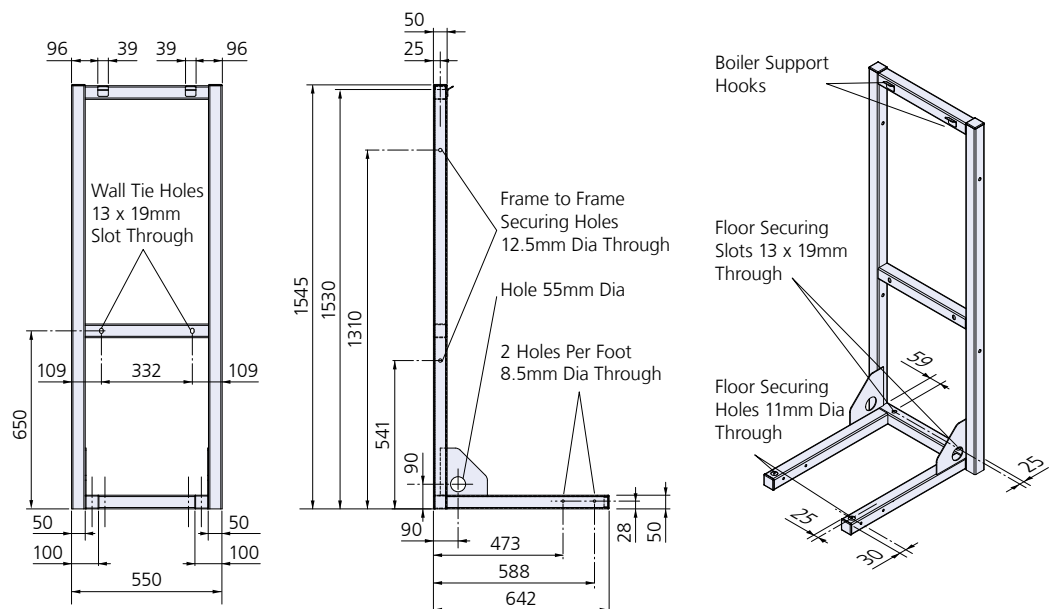
For single Stratton mk2 boilers providing support where weak walls or standalone requirement is present. Transferring the weight to the floor, multiple frames can be bolted together for modular boiler installations.

Each frame kit includes:

- ③ Fully welded construction
- ③ Pre-drilled holes for floor and wall tie bolts
- ③ Simple hook arrangement allowing fast mounting of boilers to frame
- ③ Bolts for securing multiple frames together are supplied with frame
- ③ Matt black finish

Weight - 18kg

Note: Boiler frame is not compatible with single boiler pipe kit shown on page 9.



Note: All dimensions in mm unless otherwise stated.



Low loss header & 3 port manifold

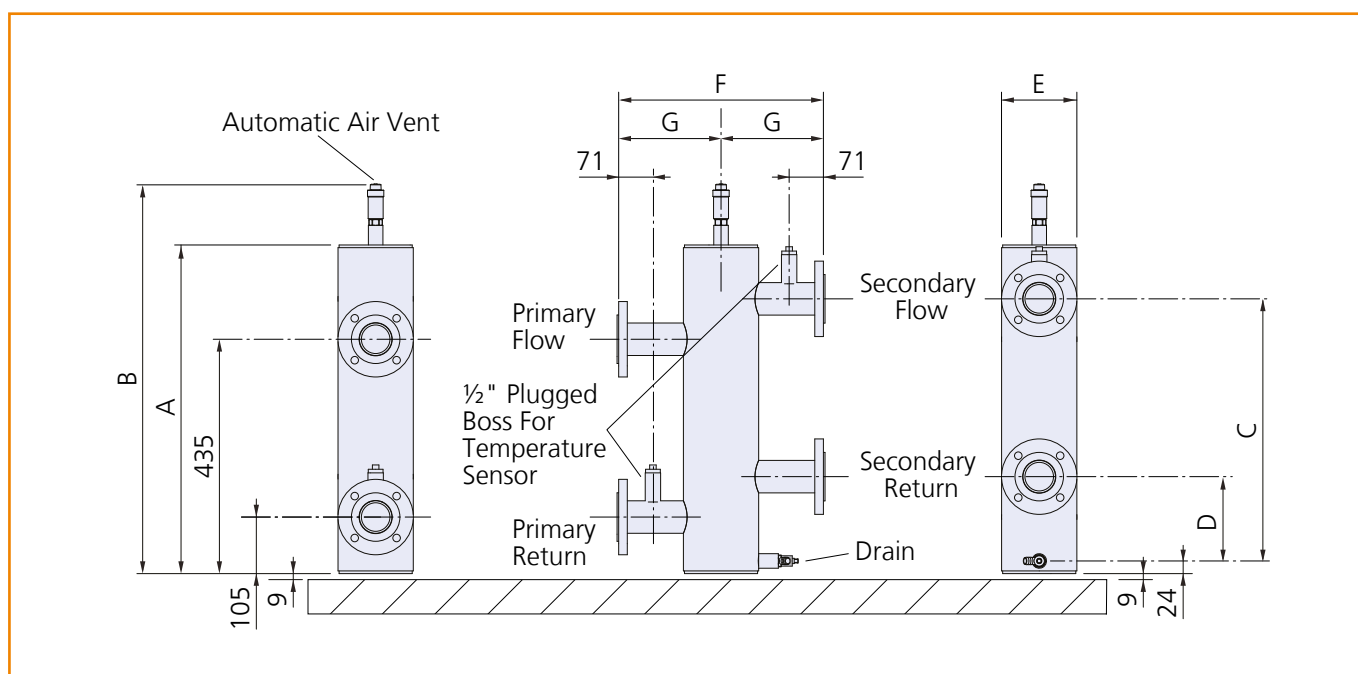
When choosing Hamworthy pipework kits you can also select the following optional components:

- Low loss header
- 3 port manifolds

Sizes are matched to the pipework kits to help speed up installation and simplify procurement.

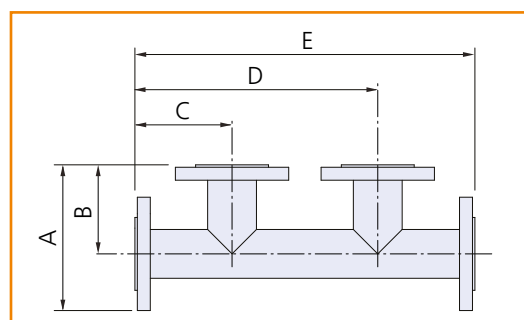
Low loss headers (optional)

| Boiler models | A | B | C | D | E | F | G |
|----------------------------|-----|-----|-----|-----|-----|-----|-----|
| S2-40, S2-60, S2-70, S2-80 | 663 | 785 | 510 | 180 | 152 | 420 | 210 |
| S2-100, S2-120, S2-150 | 710 | 824 | 535 | 205 | 220 | 460 | 230 |



Manifold extension kits (optional)

| Boiler models | A | B | C | D | E |
|----------------------------|-----|-----|-----|-----|-----|
| S2-40, S2-60, S2-70, S2-80 | 180 | 110 | 120 | 300 | 420 |
| S2-100, S2-120, S2-150 | 235 | 140 | 145 | 375 | 520 |



| Boiler models | Primary flow connection | Primary return connection | Secondary flow connection | Secondary Return Connection |
|----------------------------|-------------------------|---------------------------|---------------------------|-----------------------------|
| S2-40, S2-60, S2-70, S2-80 | DN50 PN06 | DN50 PN06 | DN50 PN06 | DN50 PN06 |
| S2-100, S2-120, S2-150 | DN80 PN06 | DN80 PN06 | DN80 PN06 | DN80 PN06 |

Note: All dimensions in mm unless otherwise stated.



Pipe kit details and dimensions

All Models

Single boiler pipe kit with low loss header

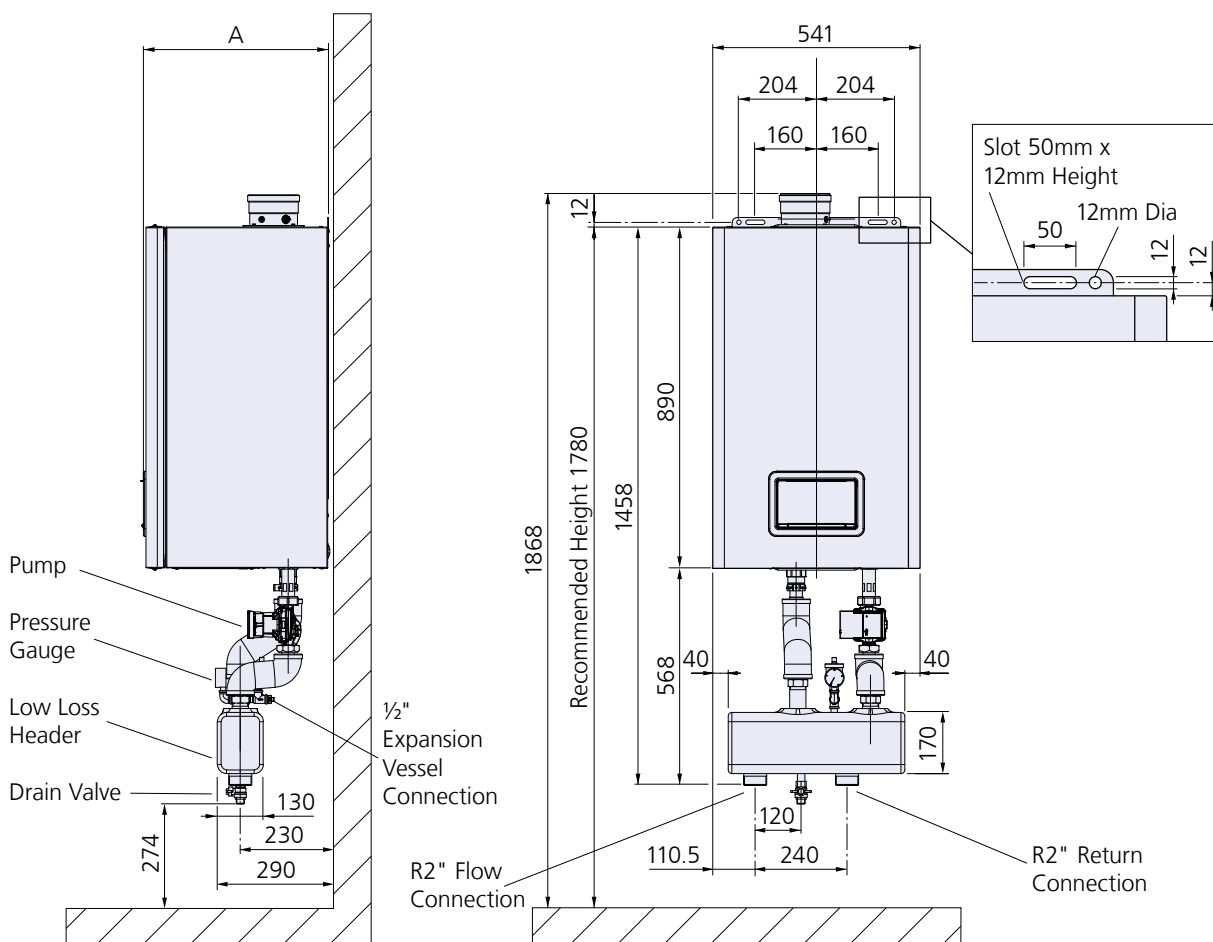
For individual boiler installations a simple pipe kit is available for location directly underneath the boiler. When using this pipe kit, the boiler must be mounted to the wall directly so the combined weight of the boiler and low loss header must be accounted for. The kit includes:

- ⌚ Low loss header
- ⌚ 2" secondary heating circuit connections
- ⌚ ErP compliant primary pump optimised for 20°C differential temperature
- ⌚ Safety relief valve – 4 bar
- ⌚ Pressure gauge
- ⌚ Drain valve

- ⌚ Interconnecting pipes between boiler and header
- ⌚ ½" Expansion vessel connection
- ⌚ Automatic air vent
- ⌚ Insulation

Weight - 15kg

Note: This pipe kit is not designed to be compatible with boilers when hung on the boiler support frame.



Note: All dimensions in mm unless otherwise stated.